

**INTEX<sup>®</sup>**



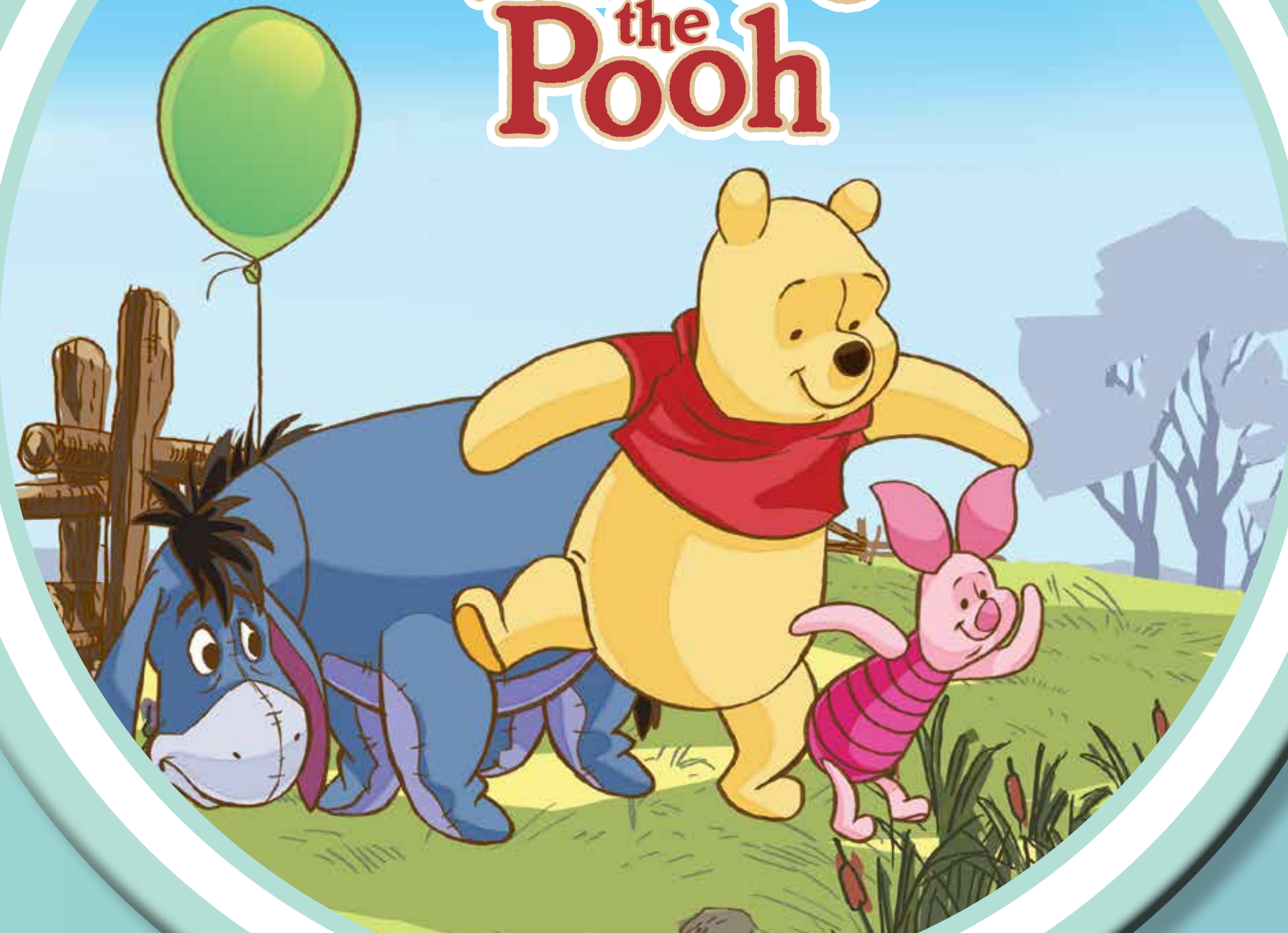
# SUMMER 2020



**Winnie  
the  
Pooh**



# Winnie the Pooh



# PODOWLER LAPS





**Ages 3+**  
**58053NP**  
**Beach Ball**

- 24" (61 cm)
- 8ga (0.20mm) vinyl
- Pegable box
- 36 ea, 12.9 lb (5.9 kg)



**Ages 3-6**  
**58260NP**  
**Swim Ring**

- 20" (51 cm)
- 8ga (0.20mm) vinyl
- Pegable box
- 36 ea, 9.9 lb (4.5 kg)



**Ages 3-6**  
**56652EU**  
**Deluxe Arm Bands**

- 9" x 6" (23cm x 15cm)
- 10ga (0.25mm) vinyl
- 2 air chambers each
- Pegable box
- 36 pairs, 11.7 lb (5.3 kg)



**Ages 3-6**  
**58392NP**  
**Pool Cruiser**

- 43" x 28" (1.09m x 71 cm)
- 10ga (0.25mm) vinyl
- Weight capacity: 59 lb (27 kg)
- Repair patch
- Pegable box
- 12 ea, 21.3 lb (9.7 kg)



**Ages 3+**  
**57516NP**  
**Ride-On**

- 43" x 33" (1.09m x 84cm)
- 10ga (0.25mm) vinyl
- Heavy duty handle
- Repair patch
- Shelf box
- 6 ea, 14.7 lb (6.7 kg)



**Ages 1-3**

**57101NP  
Play Box Pool**

- 34" L x 34" W x 10" H (86cm x 86cm x 25cm) inflated
- 10ga (0.25mm) vinyl
- Soft inflatable floor
- Capacity 6½" (17cm) of wall height: 15 gal (57L)
- Repair patch
- Shelf box  
6 ea, 14.0 lb (6.4 kg)



Soft Inflatable Floor



**Ages 3+**

**28103NP  
Easy Set® Pool**

- Approximate inflated size 72" x 20" (1.83m x 51cm)
- Top ring: 11ga (0.28mm); Wall: 18ga (0.45mm); Bottom: 10ga (0.25mm)
- Capacity 16" (41cm) of wall height: 232 gal (880L)
- Repair patch
- Shelf box  
2 ea, 13.6 lb (6.2 kg)



**Ages 6+**

**57478NP  
Swim Center™ Pool**

- 103" L x 69" W x 22" H (2.62m x 1.75m x 56cm) inflated
- 12ga (0.33mm) vinyl
- 2 air chambers, each with combo valve for quick inflation and deflation
- Capacity 14" (36cm) of wall height: 203 gal (770L)
- Repair patch
- Shelf box  
2 ea, 23.3 lb (10.6 kg)

Disney  
**Winnie  
 the  
 Pooh**



- Ages 1-3**  
**56663EU**  
**Small Deluxe Arm Bands**
- 8" x 6" (20cm x 15cm)
  - 8ga (0.20mm) vinyl
  - 2 air chambers each
  - Pegable box  
 36 pairs, 9.5 lb (4.3 kg)



- Ages 3-6**  
**58228NP**  
**Swim Ring**
- 20" (51cm)
  - 8ga (0.20mm) vinyl
  - Pegable box  
 36 ea, 9.9 lb (4.5 kg)



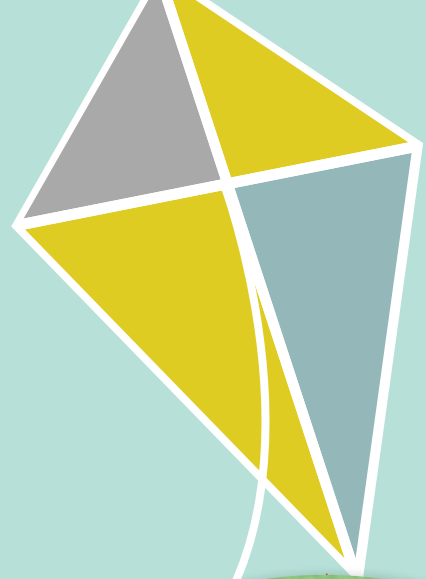
- Ages 3+**  
**58025NP**  
**Beach Ball**
- 20" (51cm)
  - 8ga (0.20mm) vinyl
  - Pegable box  
 36 ea, 9.9 lb (4.5 kg)



All Items:



# Winnie the Pooh



Soft Inflatable Floor



**Ages 1-3**

### 58415NP Baby Pool

- 43" L x 40" W x 28" H (1.09m x 1.02m x 71cm) inflated
- 10ga (0.25mm) vinyl
- Built-in sunshade
- Soft inflatable floor for extra comfort
- Capacity 4 7/8" (12cm) of wall height: 11 gal (41L)
- Repair patch
- Shelf box
- 6 ea, 17.1 lb (7.8 kg)



**Ages 1-3**

### 58433NP Baby Spray Pool

- 55" L x 55" W x 4" H (1.40m x 1.40m x 10cm) inflated
- 10ga (0.25mm) vinyl
- Built-in sprayer attaches to garden hose
- Capacity 3 1/2" (9cm) of wall height: 30 gal (115L)
- Repair patch
- Shelf box
- 6 ea, 14.7 lb (6.7 kg)



**Ages 2+**

### 58915NP Three Ring Pool

- 58" x 13" (1.47m x 33cm) inflated
- 9ga (0.23mm) rings;
- 7ga (0.18mm) floor
- Capacity 9" (23cm) of wall height: 87 gal (330L)
- Repair patch
- Shelf box
- 6 ea, 20.4 lb (9.3 kg)

# 2020

## EUROPE

Intex Trading B.V.  
Venneveld 9, 4705 RR Roosendaal,  
The Netherlands  
Tel: (31) 165-593920 • Fax: (31) 165-593969  
E-mail: [info@intexcorp.nl](mailto:info@intexcorp.nl)  
Web: [www.intexcorp.nl](http://www.intexcorp.nl)

Intex Trading S.R.O.  
Benesovská 23  
101 00 Praha 10, Czech Republic  
Tel: (420) 267 312 645 • Fax: (420) 267 312 552  
E-mail: [info@intexcorp.cz](mailto:info@intexcorp.cz)  
Web: [www.intexdevelopment.com](http://www.intexdevelopment.com)

Unitex Service (France) S.A.S.  
Z.A. de Milieure Bois du Ban - N°4  
71480 LE MIROIR, France  
Tel: (33) 385 75 64 64 • Fax: (33) 385 75 64 65  
E-mail: [info@intexcorp.com.fr](mailto:info@intexcorp.com.fr)  
Web: [www.intex.fr](http://www.intex.fr)

## INTERNATIONAL

Intex Development Co., Ltd.  
9th Floor, Everbright Centre,  
108 Gloucester Road, Wanchai, Hong Kong  
Tel: (852) 2827-0000 • Fax: (852) 2311-8200  
E-mail: [info@intexdevelopment.com](mailto:info@intexdevelopment.com)  
Web: [www.intexdevelopment.com](http://www.intexdevelopment.com)

## USA

Intex Recreation Corp.  
P. O. Box 1440  
Long Beach, CA 90801-1440  
USA  
Tel: (310) 549-5400 • Fax: (310) 513-6905  
Web: [www.intexcorp.com](http://www.intexcorp.com)



Winnie  
the  
Pooh



# INTEX®

© Disney Visit the Disney Website at [www.disney.com](http://www.disney.com)  
© Disney Based on the "Winnie the Pooh" works by A.A. Milne and E.H. Shepard.  
© Disney/Pixar  
®™ Trademarks used in some countries of the world under license from Intex Marketing Ltd. to Intex Development Co., Ltd.  
G.P.O. Box 28829, Hong Kong, and Intex Recreation Corp., P.O. Box 1440, Long Beach, CA 90801.